

Introducing the

Sleep Chamber

“Sleeping without distractions”

TARGET MARKET:

- People that have trouble sleeping with outside distractions.
- Couples that have different sleeping schedules.
- People who suffer from sleep disorders.

FEATURES:

- Easily folds up against the wall when not in use.
- Provides a quiet sequestered rest experience from head to toe.

PATENT INFORMATION

A provisional and design patent application has been filed as of August 2017. The patent search was performed by The Mars Rising Network. It was concluded that there is nothing similar to this product on the market, which means this unique product could be patented and brought into people's homes.

SUMMARY

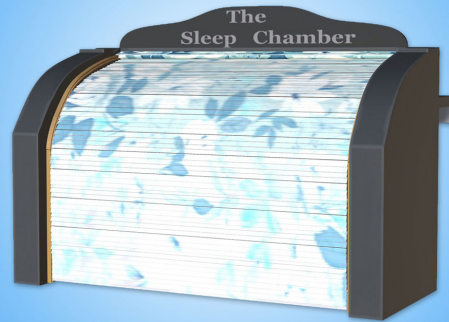
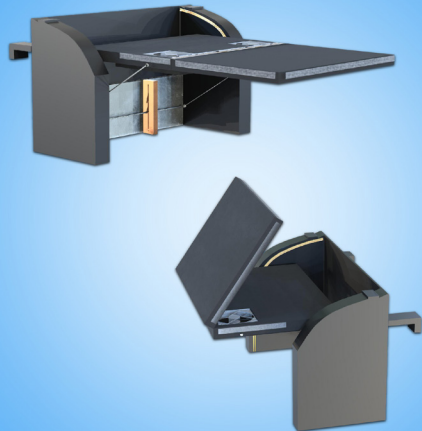
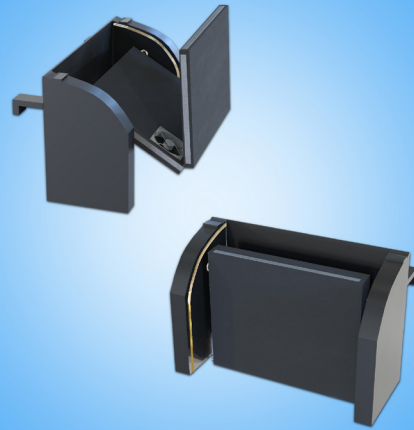
The **Sleep Chamber** is a revolutionary invention that allows a person to sleep comfortably in a lighted room by creating a self contained environment. This prevents all distractions that could affect a person's ability to sleep. The concept to its imaginative design is based on the idea of cutting out the external senses to allow the mind to relax. The way

the Sleep Chamber works is by having a cover or let us say a Chamber that can be attached to a headboard or a wall (via adjustable 'L' brackets) and extend over a bed to create a chamber, that covers a person from their head to just above their knees, for sleeping or just to escape distractions of the day to read a book or magazine. The back wall is made from fiber glass to make it light weight. The Blackout curtain is black polyester to provide the perfect sleeping condition. Yes, perfection is the word when it comes with the Sleep Chamber.

The idea here is to create a closed and shaded area with ventilation, blue tooth speakers for soothing music and total darkness to enhance the sleeping experience. The cover would also shut out the noise made by a snoring partner, television and many other things that might affect the sleeping process.

Not only does it allow better sleep free of distractions, studies show the benefits of sleeping in total darkness. Any amount of light reduces the production of melatonin by up to 50%. Melatonin helps prevent depression, heart disease, insomnia, breast cancer in women and the list goes on and on.

As for use and storage, the Sleep Chamber is designed for efficiency. The Chamber would fold out on its hinges when in use and folds back in against the wall or headboard after waking. Being portable means that it can be used almost anywhere. A perfect invention for a perfect sleep.



See how it works!
Watch the video at
www.TheSleepChamber.net



The Sleep Chamber

For more information:

Randall A. Riggs

Jennifer Riggs

Inventors

Kokomo, IN

PH: (765) 480-4393

Email: info@TheSleepChamber.net

www.TheSleepChamber.net

About the Inventors

The inventors, Randall and Jennifer Riggs of Kokomo, IN had an idea to help with that age-old problem how to sleep without outside distractions. Randall contacted the Mars Rising Network and had a provisional and design patent application filed and had the invention designed properly so that they may see success with this great idea and turn it into a real product. They are actively seeking a manufacturer or a company that would have an interest in licensing the product for a royalty.

Member of the



888-627-7747 / 888-MARS-RISING

www.themarsrisingnetwork.com • BBB A+ 5 Star Consumer Rating



The Sleep Chamber

Randall A. Riggs

Jennifer Riggs