

Introducing the

## Wooffer™ Pet brush

“Keeping your pet clean and fresh smelling longer between baths”

### TARGET MARKET:

- Anyone who owns/cares for dogs and cats

### FEATURES:

- Cleaning pads that fit over the bristles
- A button on the handle that dispenses the cleaning solution
- A refillable handle that holds the cleaning solution

### PATENT INFORMATION

A provisional and design patent application has been filed as of October 2017. The patent search was performed by The Mars Rising Network. It was concluded that there is nothing similar to this product on the market, which means this unique pet product could be patented and brought into people's homes.

### SUMMARY

Introducing the **Wooffer™ Pet Brush**.

Keeping your pet clean and fresh smelling means longer between baths.

The multi-function Wooffer™ has bristles on one side for combing... On the other side, you adhere a cleaning pad into which a cleaning solution is applied by pressing a button on the handle. The solution is held in the handle and is easily refillable. Once

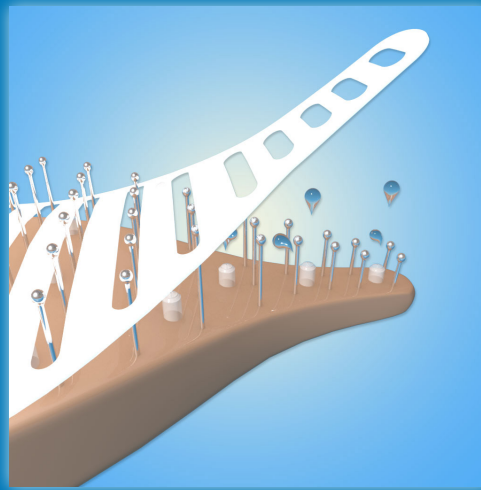
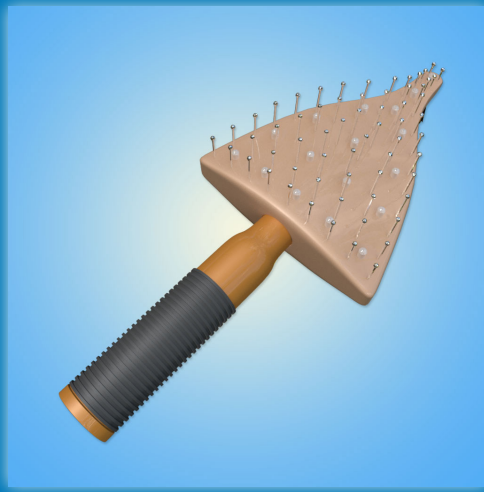
the cleaning pad has been used it is easily removed and replaced.

The brush's narrow tip allows it to get into normally difficult to reach areas.

The Pet Brush is a two-sided brush: One side for normal brushing and the other side has bristles and conduits for spraying the fluid onto a pad for cleaning and keeping the pet clean and fresh smelling between baths. The pad is applied over the conduits and between the bristles via holes in the pad. The pad is absorbent and will collect dirt and loose hair that comes off while brushing. After the pad builds enough dirt it is removed and thrown away.

The fluid is a cleaning/disinfecting liquid that is poured into the handle, which unscrews from the base. Once the fluid is filled in the handle and the handle is reinserted, a button can be pressed that will build up the air pressure inside the handle and will be pushed into the hollow base of the main brush. The liquid is pushed through a gasket/valve in the base of the brush. The gasket is one way and keeps the fluid from leaking out once in the base.

The **Wooffer™** is a single brush that helps keep your pet clean, smelling fresh AND groomed.



See how it works!  
Watch the video at  
[www.TheWooffer.com.com](http://www.TheWooffer.com.com)



Pressure button for dispensing  
cleaning solutions onto the pads

The Wooffer™ Pet Brush

For more information:

**Shahid J. Bokhari**

**Inventor**

Pittsburgh, PA

PH: (631) 258-6260

[www.TheWooffer.com](http://www.TheWooffer.com)

Email: [info@TheWooffer.com](mailto:info@TheWooffer.com)

#### **About the Developer**

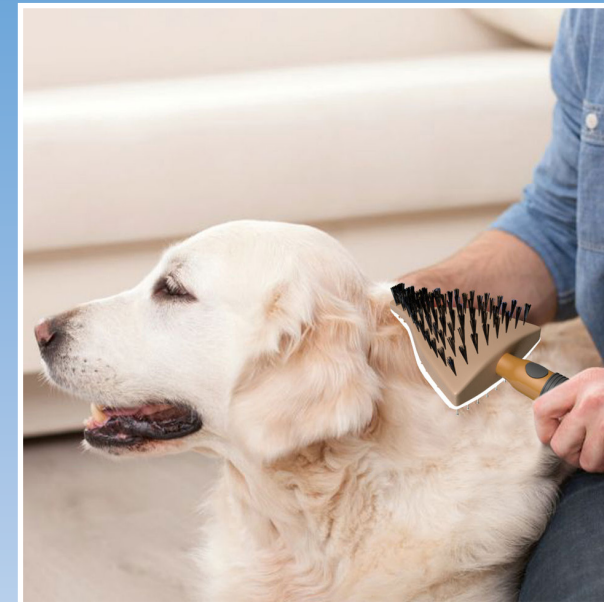
The inventor, Shahid J. Bokhari of Pittsburgh, PA had an innovative idea for keeping pets cleaner and fresher between baths. Shahid contacted the Mars Rising Network and had a provisional and design patent application filed and had the invention designed properly so that he may see success with this great idea and turn it into a real product. He is actively seeking a company that would have an interest in licensing the product for a royalty.

Member of the



**888-627-7747 / 888-MARS-RISING**

[www.themarsrisingnetwork.com](http://www.themarsrisingnetwork.com) • BBB A+ 5 Star Consumer Rating



## **The Wooffer™ Cleaning Brush**

**Shahid J. Bokhari**